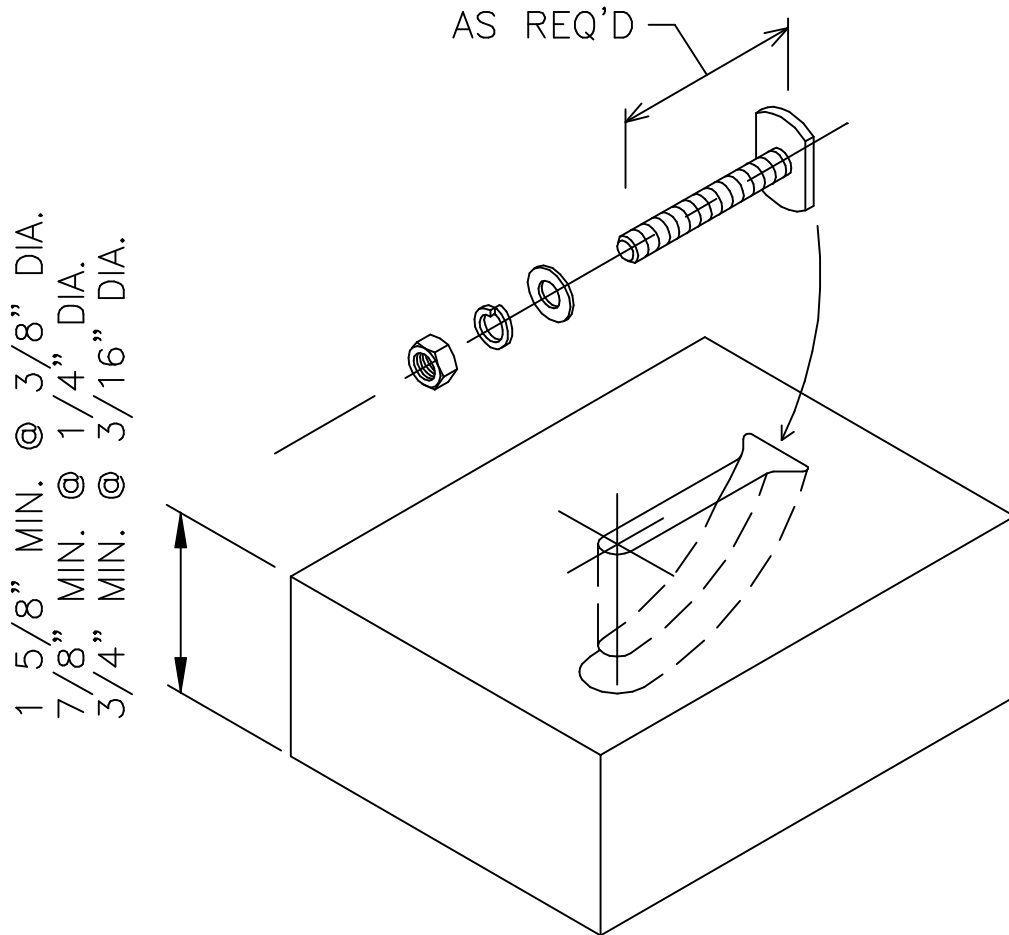


CSG005



#### NOTES

1. 3/8", 1/4" OR 3/16" DIA. STAINLESS STEEL BOLT, NUT, FLAT & LOCK WASHER. BOLT IS INSERTED INTO ROUTED SLOT IN BACK OF STONE

2. US PATENT NO. 4,020,610  
CANADA PATENT NO. 1052122

ANCHOR DETAIL — 3/16" DIA., 1/4" DIA. & 3/8" DIA. (TYPE 31)